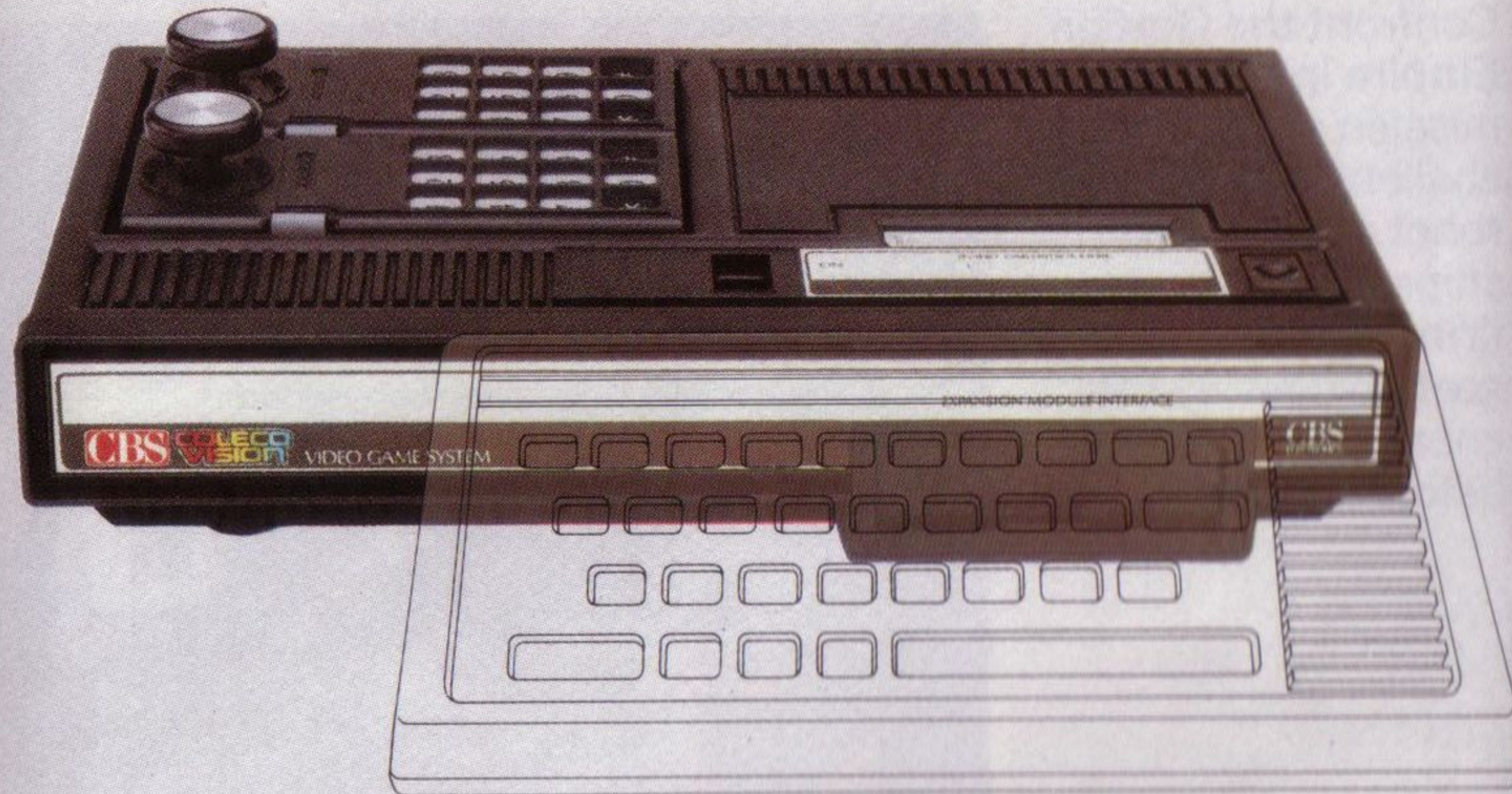


## EXPANSION MODULE 3: HOME COMPUTER



Computers are playing an increasing role in the lives of most people. Children, particularly, are becoming more conversant with the functions and uses of computers as evidenced by the increasing penetration of home computers in schools.

The CBS ColecoVision™ Home Computer Expansion Module allows conversion of the CBS ColecoVision™ video game system into a sophisticated Home Computer. The flexibility of this design allows numerous advantages for the consumer and is an important feature of the CBS ColecoVision™ system.

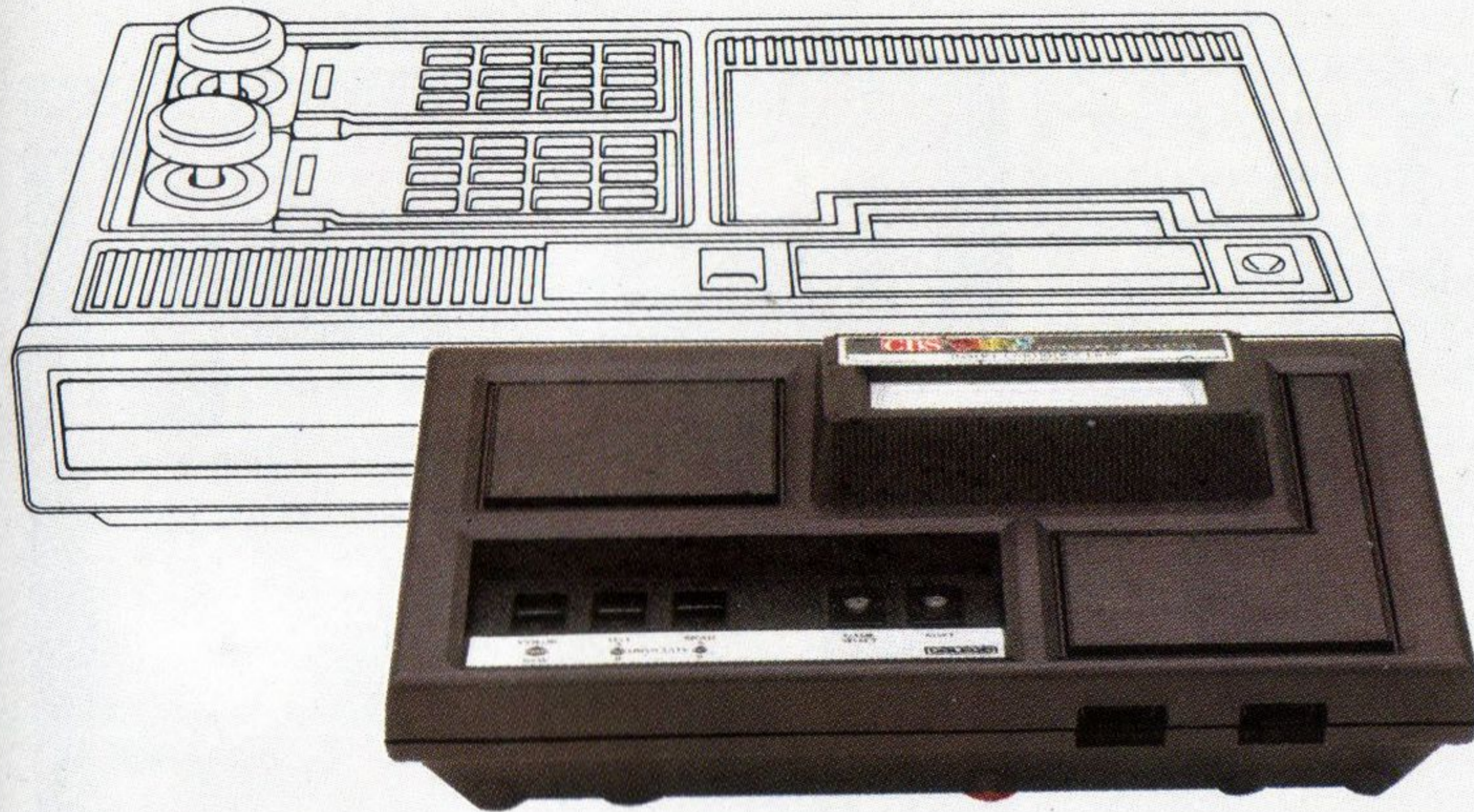


# CBS

ELECTRONICS

EXCITING ARCADE  
VIDEO GAME  
CARTRIDGES FOR  
THE LEADING  
VIDEO GAME  
SYSTEMS

## EXPANSION MODULE 1: ATARI CONVERTER



The First Expansion Module is the Atari® Converter Module. This expansion module allows Atari® V.C.S.™ software cartridges to be played on the Colecovision™ console. Simply plug the Atari® converter via the Expansion Module Interface and the entire library of Atari® V.C.S.™ cartridges become available to the CBS Colecovision owner. Alternatively, existing Atari® owners can purchase the CBS Colecovision™ video game system without discarding their software library.

## EXPANSION MODULE 2: TURBO DRIVE MODULE

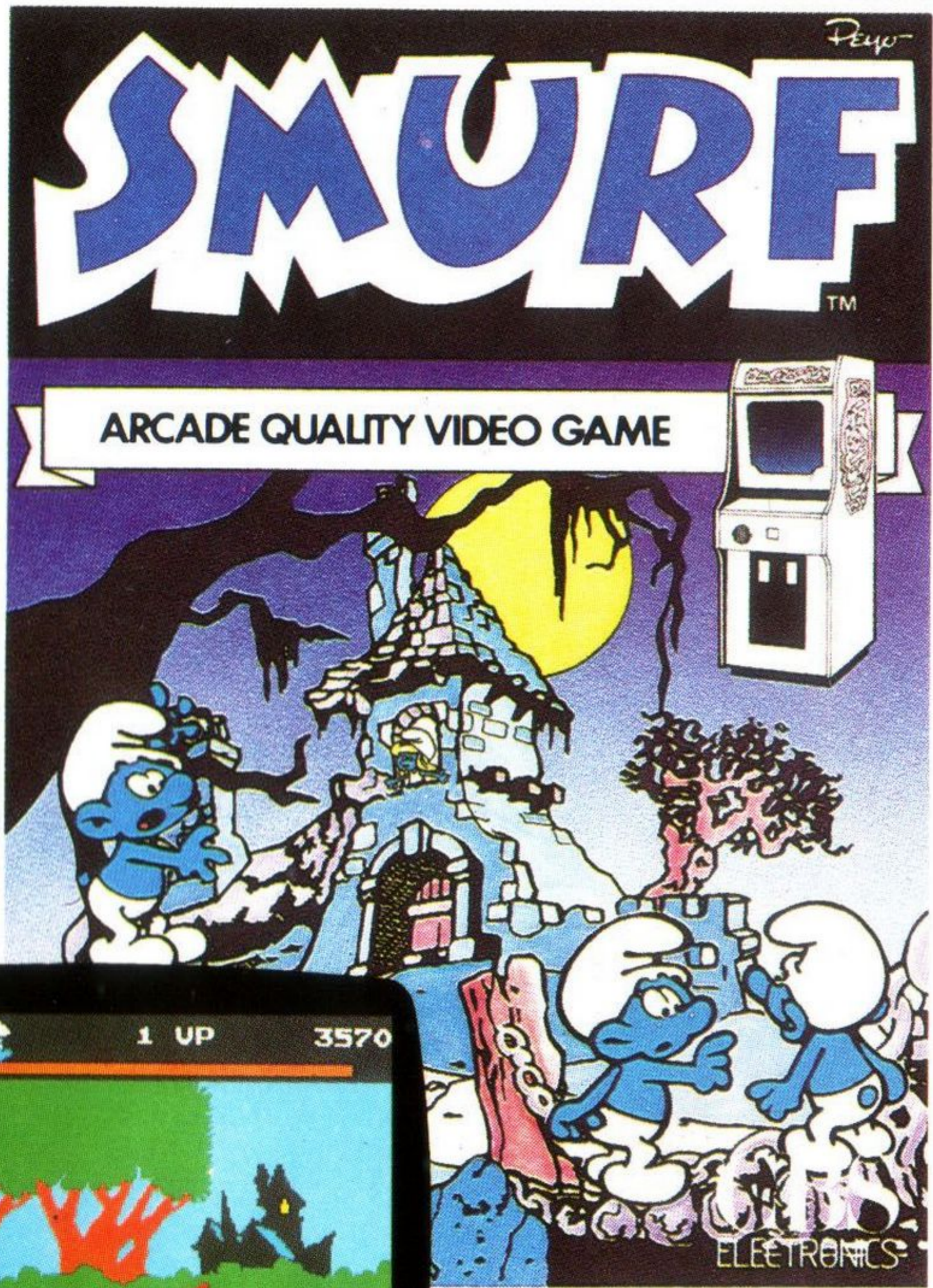


The Turbo™ Driver Expansion Module allows you to actually drive the vehicle which appears on your T.V. screen. The Turbo™ Driver Expansion Module consists of a steering wheel, dashboard and accelerator pedal. One CBS Colecovision™ hand controller is mounted in the dashboard to provide a gear change unit. With the Turbo™ Driver game cartridge (provided with the unit) plugged into the CBS Colecovision™ console you actually drive your way through towns and tunnels and negotiate obstacles and hazards in this hair raising race. More games will soon be available which make use of the Turbo™ Drive Module

TURBO™ IS THE TRADEMARK OF SEGA ENTERPRISES, INC.

# SMURF Rescue in Gargamel's™ Castle (Peyo)

In this zany adventure, you control a SMURF™ who is off on a rescue mission to free the Smurfette™ held prisoner in Gargamel's Castle. On his way, the SMURF™ must jump over and duck under natural obstacles, and avoid dangerous animals. And, to maintain his strength, he must eat hard-to-reach berries. Will he make it to the castle and free Smurfette™?



SMURF™, SMURFETTE™ and GARGAMEL™ are the trademarks of © Peyo 1982 Licensed by Wallace Berrie & Co., Van Nuys, CA

All screens shown in CBS Colecovision format.

CBS COLECOVISION 7426-0	ATARI® V.C.S.™ 7526-7	MATTEL INTELLIVISION™ 7626-5
----------------------------	--------------------------	---------------------------------

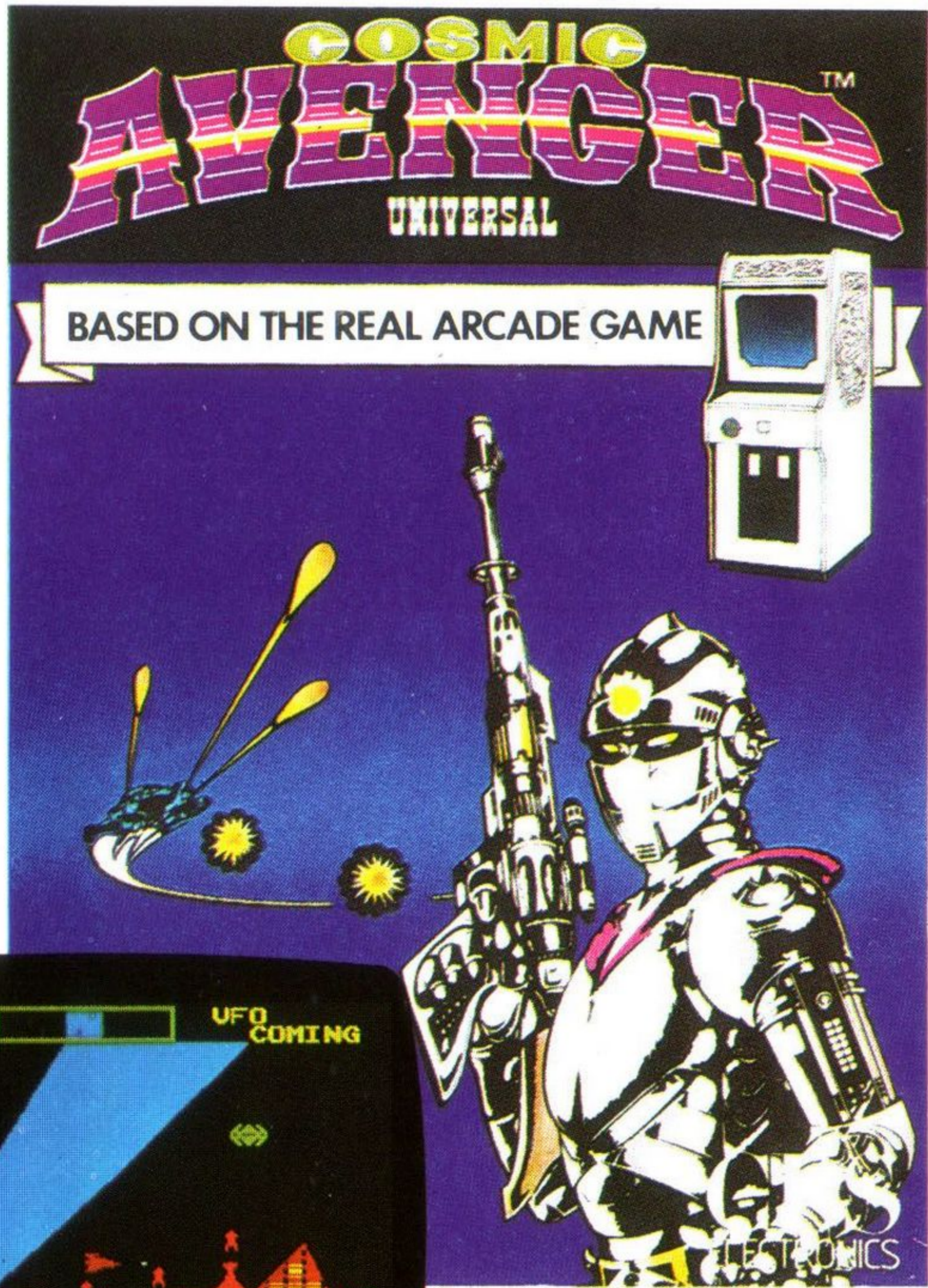
# VIDEO GAME CONSOLE



The CBS Colecovision™ video game system has advanced technology which produces superlative graphic resolution and excellent sound effects. The styling of the console and hand controllers has been carefully researched; the console is designed to complement modern hi-tech equipment and has clear features for easy operation. The hand controllers allow fingertip control via the 8 direction joystick and feature 2 independent fire buttons. The push button keyboard is used for game selection and also for game control with some cartridges. The hand controllers, which are detachable and have 6 feet of telephone coil cable, are conveniently stored in the CBS Colecovision™ console when not in use. The CBS Colecovision™ console expands in function through the Expansion Module Interface for which 3 Expansion Modules are available at this time.

# COSMIC AVENGER™ (Universal)

This futuristic air and sea battle game is fought between a ship you control and an advanced alien civilization. You must manoeuvre your ship over the complex enemy cities and beneath the ocean, firing as you go. Your goal is to destroy the enemy's installations while avoiding their relentless return fire! How far can you get?



COSMIC AVENGER™ is the trademark of Universal Co. Ltd.  
© 1981 Universal Co. Ltd.

All screens shown in CBS Colecovision format.

CBS COLECOVISION 7431-0	ATARI® V.C.S.™	MATTTEL INTELLIVISION™
----------------------------	----------------	------------------------

# LADYBUG (Universal)™

In this game, you direct a lady bug through a tricky maze. While eating dots, she must avoid running over the poisonous skulls and encountering the evil insects which are out to devour her. Revolving doors permit her to change the maze and thwart her pursuers! Can you get her through?



LADY BUG™ is the trademark of Universal Co. Ltd.  
© 1981 Universal Co. Ltd.

All screens shown in CBS Colecovision format.

CBS COLECOVISION 7432-8	ATARI® V.C.S.™	MATTTEL INTELLIVISION™
----------------------------	----------------	------------------------

# EXCITING ARCADE VIDEO GAME CARTRIDGES FOR THE LEADING VIDEO GAME SYSTEMS

The video game cartridges described in this leaflet are available for the leading video game systems — Atari® V.C.S.™, Intellivision™ and CBS Colecovision — the technologically advanced, expandable video game system.

Each cartridge has the maximum technology built-in and is designed to produce the best possible graphics, sounds and game play.

To help you select the correct video game cartridge for your system packing is colour coded:

Silver — CBS Colecovision™ video game system

Red — Atari® Video Computer system™

Blue — Intellivision™ Master components

Some video game cartridges are not available for all 3 systems. Check the availability of cartridges at your local stockist.

CBS Electronics  
Ideal Toy Co. Ltd.  
Headley Rd. East,  
Woodley, Berks.

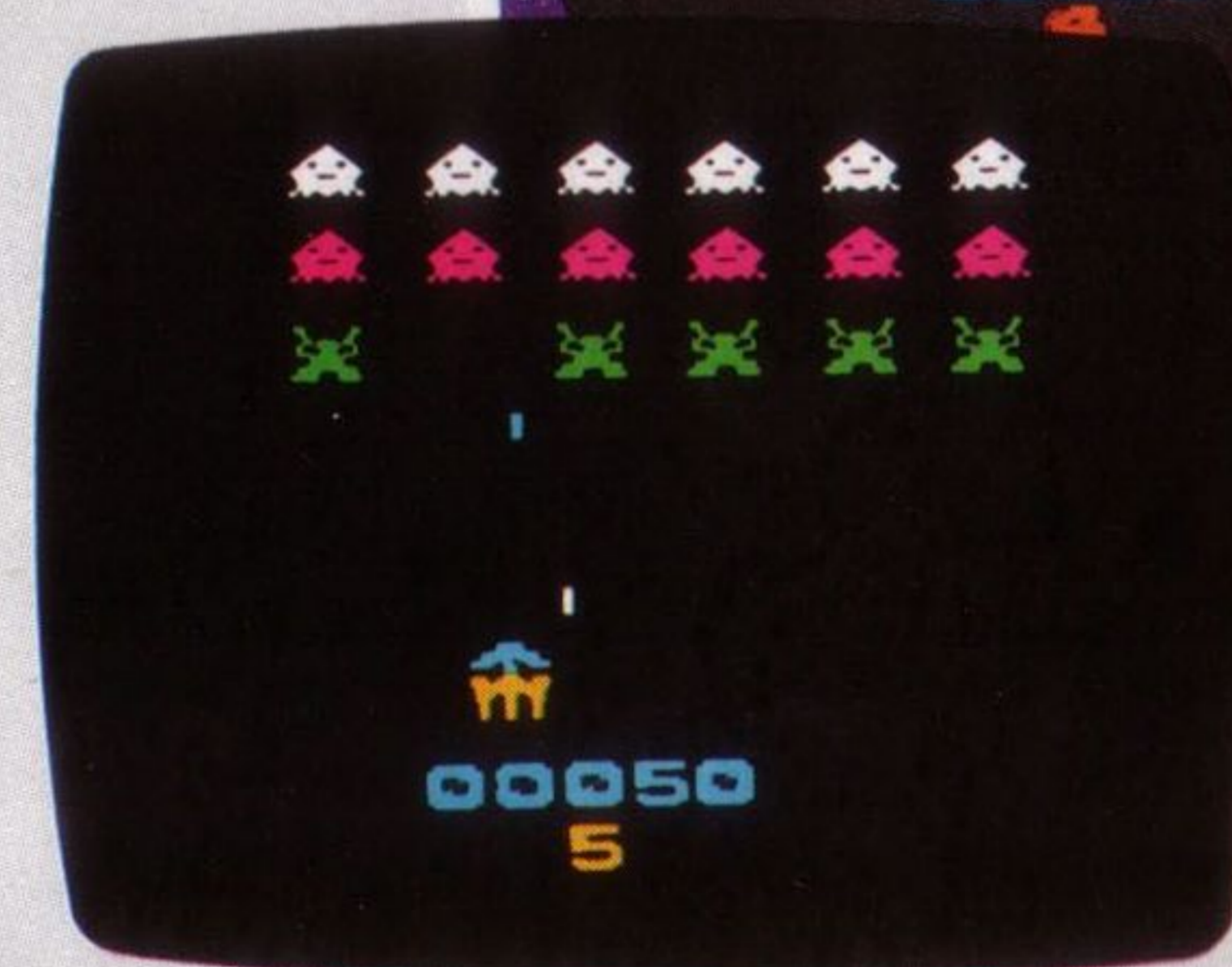
ATARI® V.C.S.™ IS THE TRADEMARK OF ATARI, INC.  
INTELLIVISION™ IS THE TRADEMARK OF MATTEL, INC.  
CBS is a trademark of CBS, Inc. Colecovision is a trademark of Coleco Industries, Inc.

## GORF (Bally Midway)™

Confront the Gorfian Empire in this multi-mission space challenge. Repel robot attacks, laser ships, and torpedo-firing fighters! Your goal: to destroy the enemy Flag Ship before it destroys you!



© Copyright 1981  
Bally Midway Mfg. Co.  
All Rights Reserved



All screens shown in CBS Colecovision format.

CBS COLECOVISION  
**7434-4**

ATARI® V.C.S.™  
**7534-1**

MATTEL INTELLIVISION™  
**7634-9**

WIZARD OF WOR (CBS)™

Descend into the labyrinthine dungeons of Wor to outshoot and vaporize monsters, beat the Wizard and emerge victorious. Warriors outwit the monster Worlings in constantly changing dungeon mazes. Special Radar Screen reveals invisible monsters. Beware the Wizard—if he shows up, it's a fight to the finish!



© Copyright 1981  
Bally Midway Mfg. Co.  
All Rights Reserved

All screens shown in CBS Colecovision format.

CBS COLECOVISION 7435-1	ATARI® V.C.S.™ 7535-8	MATTEL INTELLIVISION™ 7635-6
----------------------------	--------------------------	---------------------------------

DONKEY KONG (Nintendo)™

In this engaging game, Donkey Kong™ the ape has captured Mario the carpenter's girlfriend and has taken her to the top of a steel fortress. You must get Mario to the top to save her! But—as he runs across the girders and up the ladders, the ape throws barrels at him to prevent his progress. There are even fireballs that block his path. Mario must jump the barrels and fireballs to get to the top and rescue his girlfriend. Can you get him there in time?



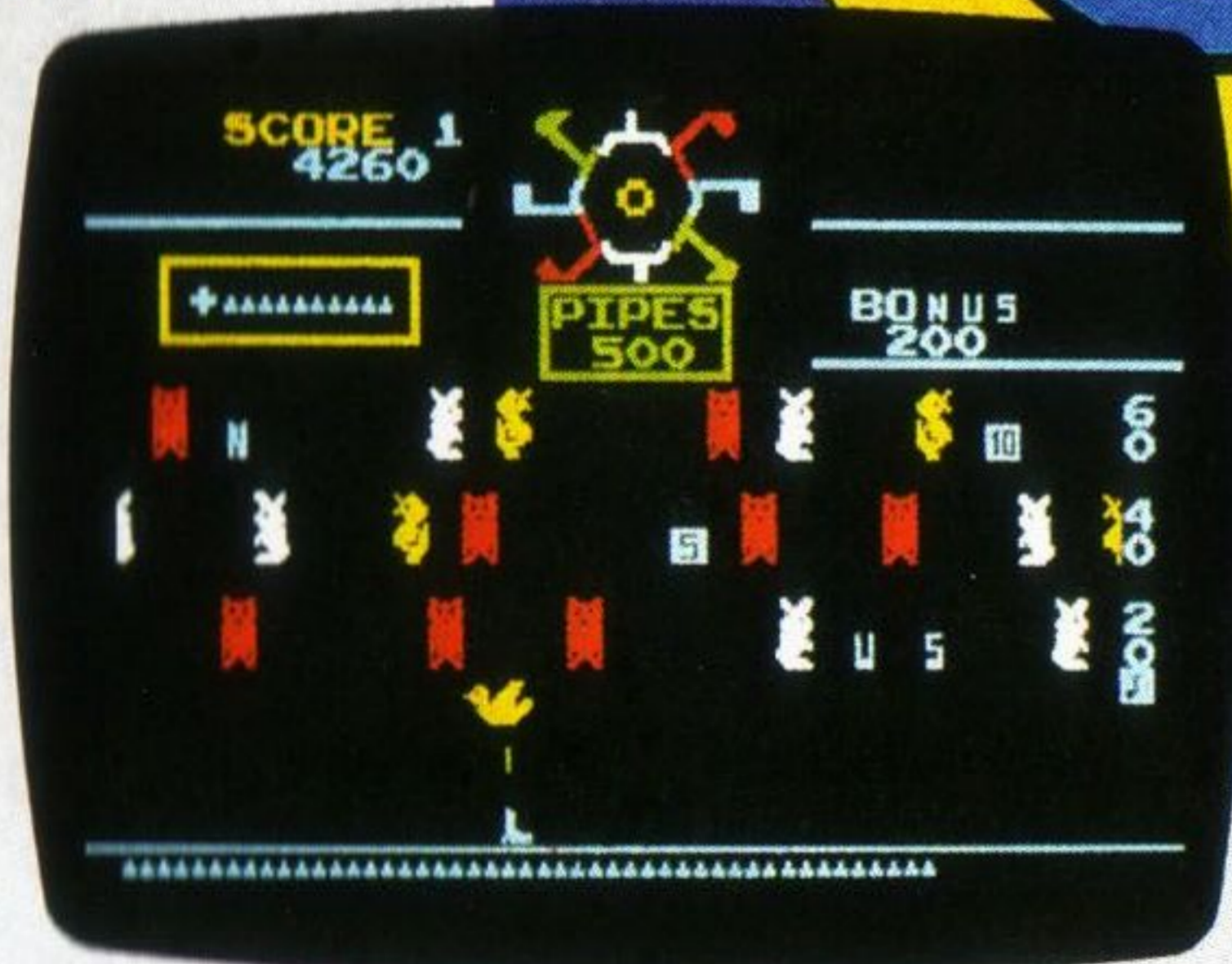
DONKEY KONG™ is the trademark of Nintendo of America, Inc. © 1981 Nintendo of America Inc. Exclusive Licensee—Coleco Industries, Inc.

All screens shown in CBS Colecovision format.

CBS COLECOVISION Available with console	ATARI® V.C.S.™ 7525-9	MATTEL INTELLIVISION™ 7625-7
--	--------------------------	---------------------------------

# CARNIVAL (Sega)™

This game captures the fun, excitement, and sounds of an old-time shooting gallery. Blaze away at clay pipes, dancing bears and sitting ducks. But watch out, those aren't ordinary sitting ducks. They come to life when they reach the end of the gallery, and avenge themselves by eating from your limited supply of ammunition. How many targets can you shoot down in the time allotted?



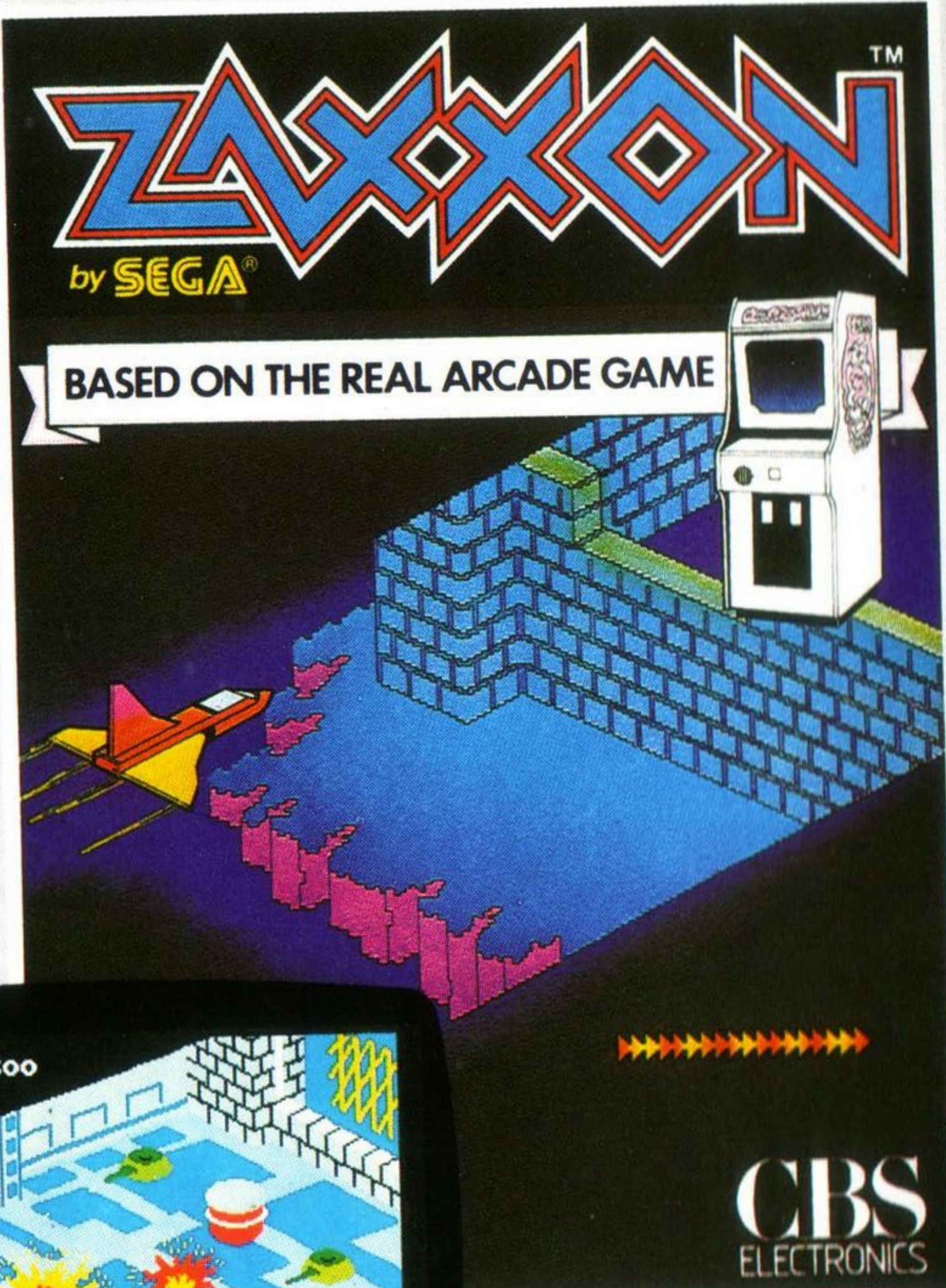
CARNIVAL™ is the trademark of Sega Enterprises, Inc.  
© 1980  
Sega Enterprises, Inc.

All screens shown in CBS Colecovision format.

CBS COLECOVISION 7430-2	ATARI® V.C.S.™ 7530-9	MATTEL INTELLIVISION™ 7630-7
----------------------------	--------------------------	---------------------------------

# ZAXXON (Sega)™

This fantastic three dimensional space battle game puts you in control of a futuristic spaceship. The ship zooms through the sky, diving down to bomb the enemy fighter planes and to attack the enemy's installations. The ship must avoid hazardous walls, devastating force fields and the enemy's fire! Can you do it?



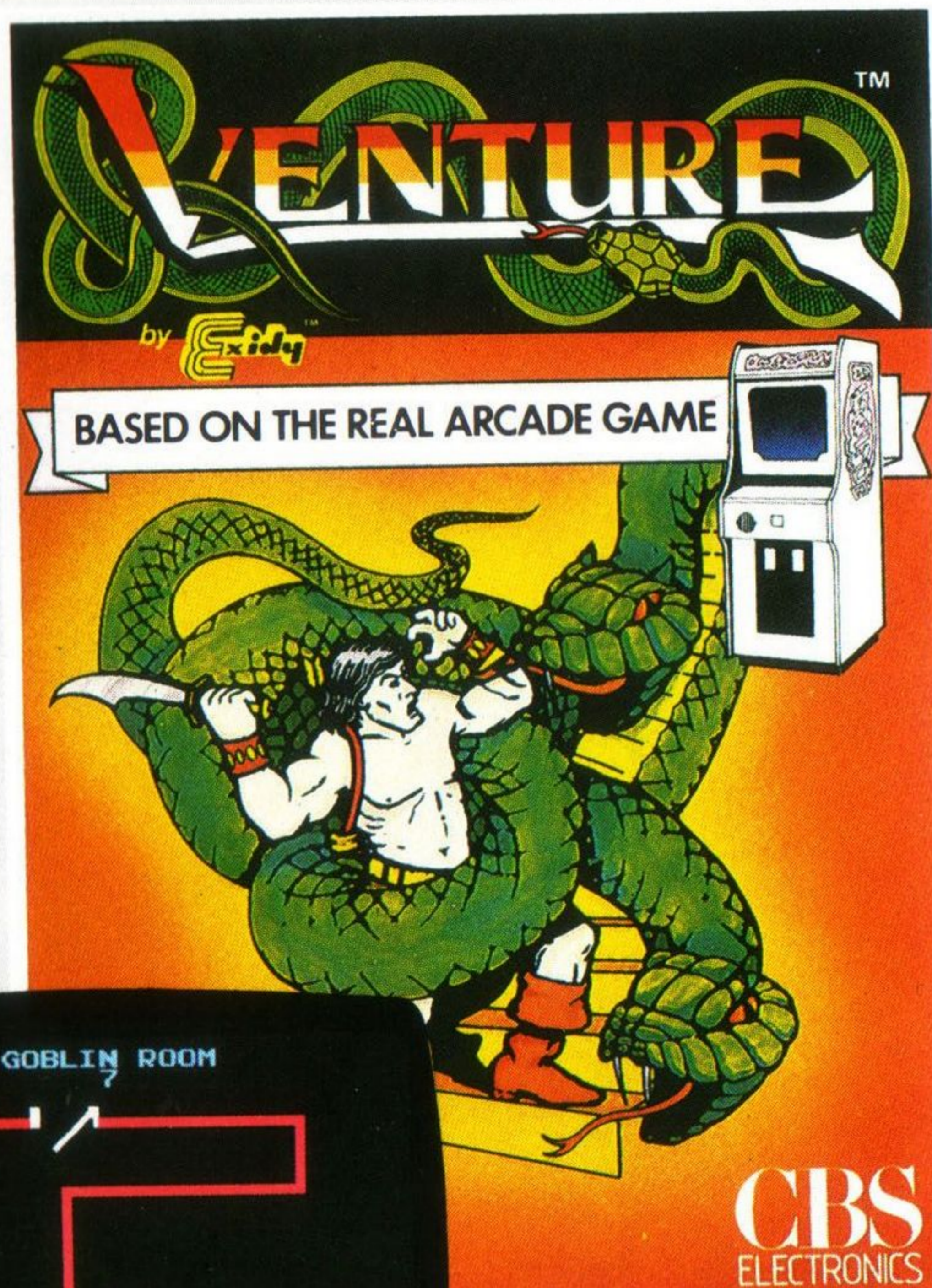
ZAXXON™ is the trademark of Sega Enterprises, Inc.  
© 1982  
Sega Enterprises, Inc.

All screens shown in CBS Colecovision format.

CBS COLECOVISION 7427-8	ATARI® V.C.S.™ 7527-5	MATTEL INTELLIVISION™ 7627-3
----------------------------	--------------------------	---------------------------------

## VENTURE (Exidy)™

In this unique game, you control Winky™ — the heroic adventurer — who is off on an expedition to claim the treasures that are hidden in the dungeon. Each treasure is in a chamber — protected by dangerous monsters. He must use his bow and arrow to ward off the monsters and claim the treasures. The more he ventures — the more he gains!



VENTURE™ and WINKY™ are the trademarks of Exidy Incorporated  
© 1981 Exidy Incorporated

All screens shown in CBS Colecovision format.

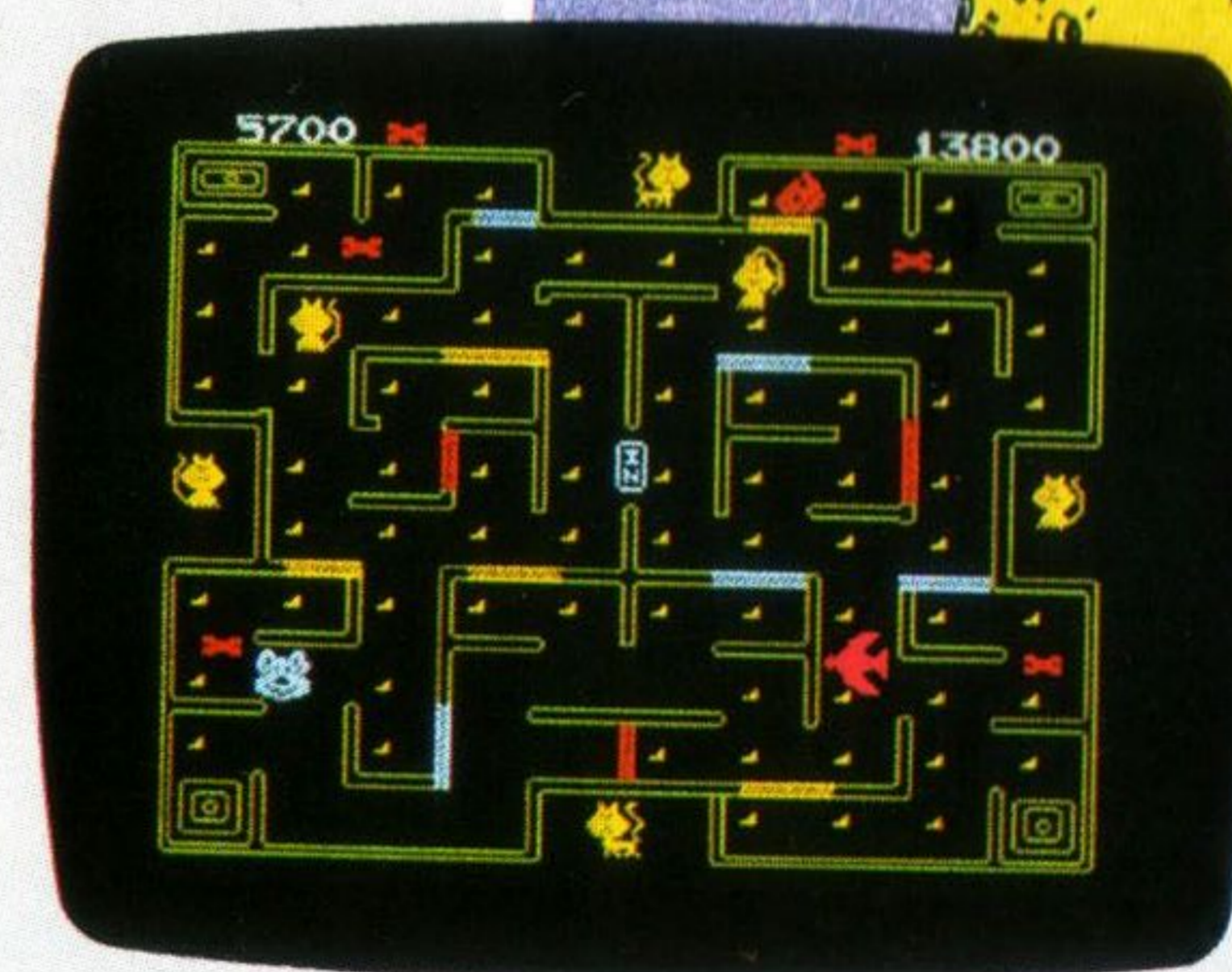
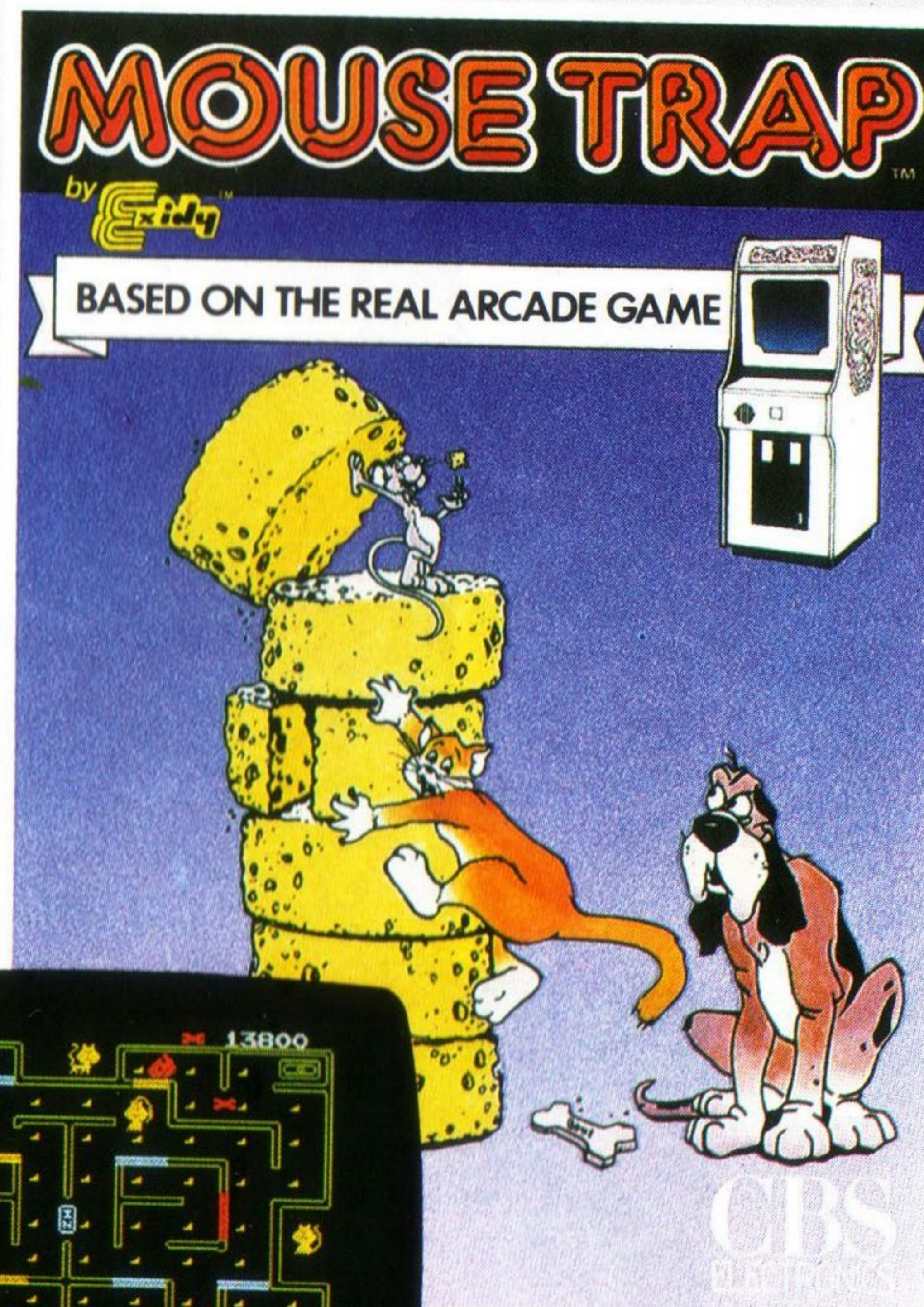
CBS COLECOVISION  
**7428-6**

ATARI® V.C.S.™  
**7528-3**

MATTEL INTELLIVISION™  
**7628-1**

## MOUSE TRAP (Exidy)™

This maze game puts you in control of a mouse who must be guided through a labyrinth of doors and corridors. As it goes, the mouse eats cheese bits and tries to avoid the ravenous cats. At times, the mouse can transform into a dog and go after the cats! Or, he can dash through a secret tunnel and re-enter in a safe area. Can you help him chomp his way to victory?



MOUSE TRAP™ is the trademark of Exidy Incorporated  
© 1981 Exidy Incorporated

All screens shown in CBS Colecovision format.

CBS COLECOVISION  
**7429-4**

ATARI® V.C.S.™  
**7529-1**

MATTEL INTELLIVISION™  
**7629-9**